

GeneXpert® System Setup Instructions

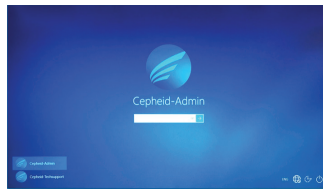
Refer to Operator Manual for detailed instructions.

- 1 Turn the power switch of the GeneXpert instrument to the **ON** position: the blue light on the front panel will light up.



- 2 Turn the computer **ON**.

- 3 Click on the **Cepheid-Admin** icon.
User-Account: **Cepheid-Admin**
Password: **cphd**

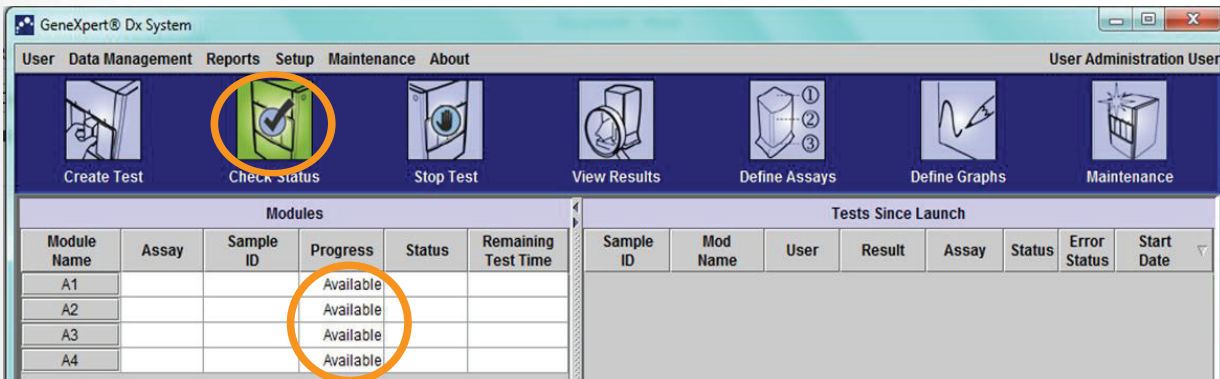


(If applicable) A prompt will be displayed to change the password. Follow the onscreen instructions to change the password.

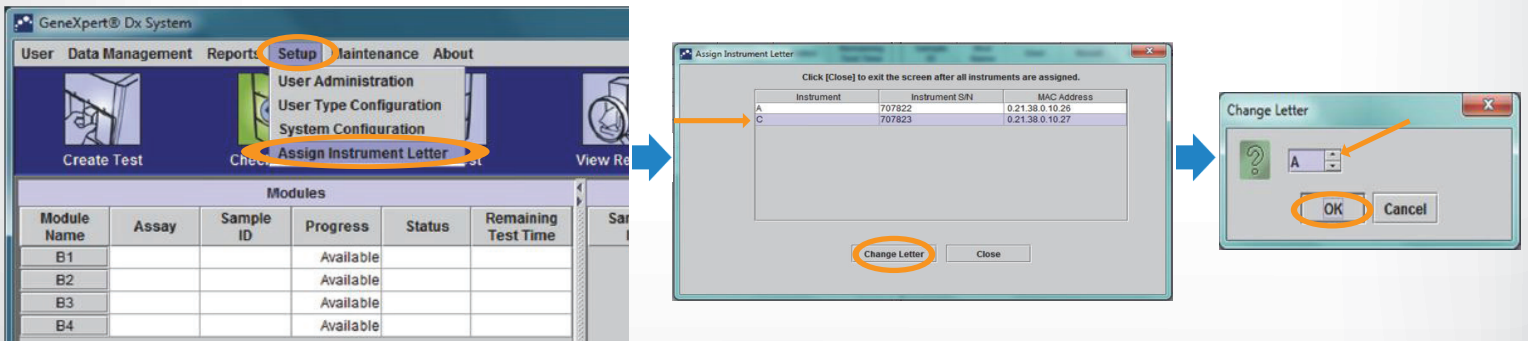
Enter the old password: **cphd**
Enter the new password: **cphd**
Confirm password: **cphd**

- 4 The GeneXpert Dx software starts automatically.

- 5 In the **Check Status** screen, verify that all the modules are **Available**.

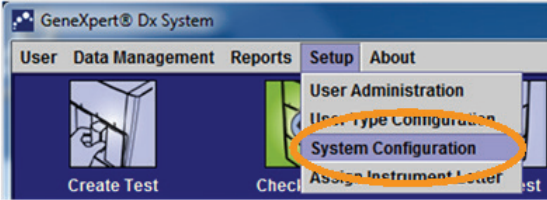


- 6 Confirm correct letter assignment and update if required.

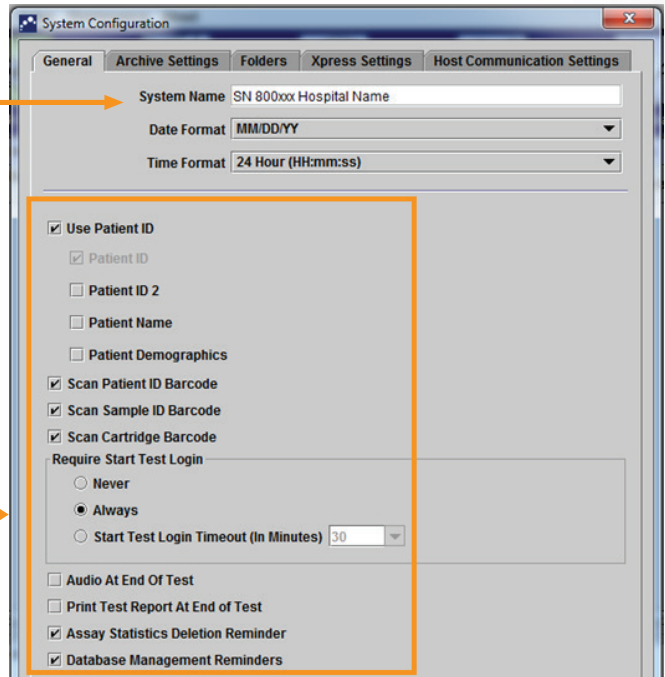


GeneXpert® System Setup Instructions

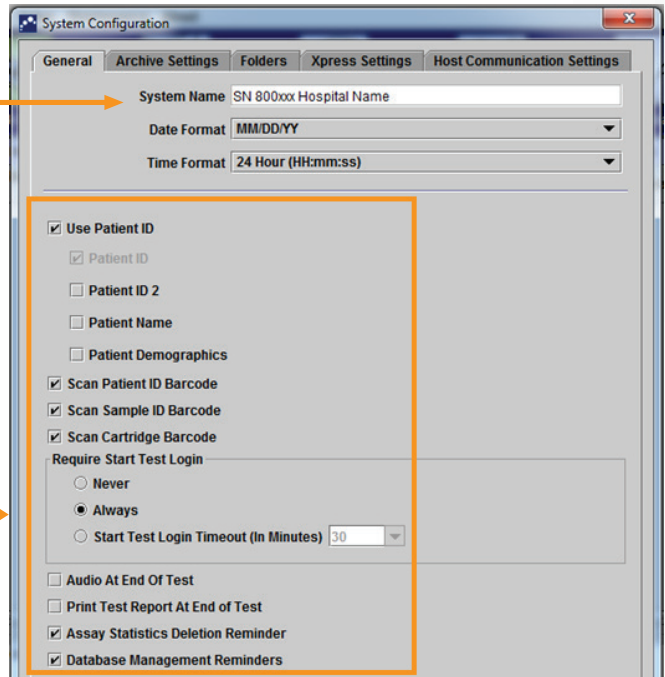
7 Click on **Setup** and then select **System Configuration**.



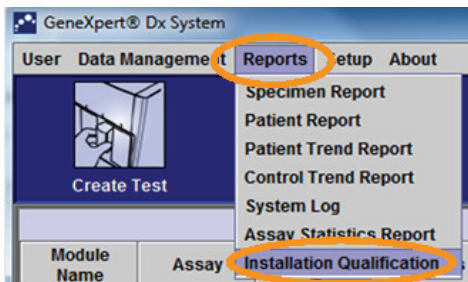
8 Rename your GeneXpert (if applicable).



9 Set up the options according to your needs.



10 To complete the installation, you must generate, sign, and save the **Installation Qualification** report.



SN 800xxx Hospital Name 08/01/15 13:

GeneXpert® Dx System Installation Qualification Report

This report provides documented evidence of the installation of this GeneXpert® Dx System.

System Information

Software	Version	Status
GeneXpert® Dx System	4.7c	Pass
Java Runtime Environment	1.7.0_60	Pass
GX_Utils DLL	0.8.4.0	Pass
SQL Database	Microsoft SQL Server 11.00.5058	Pass
Database	gx_db 3.0.5.0	Pass
Operating System	Windows 7 6.1 Service Pack 1	Pass
CIT Plug-In	1	Pass

Instrument Information

Instrument A	Gateway Firmware
Instrument S/N 803488	2.0.18

Module Name	Module S/N	Module Firmware	Internal Temp °C	Status
A1	628676	3.3.3	28.8	Pass
A2	638430	3.3.3	28.0	Pass
A3	638964	3.3.3	27.7	Pass
A4	641366	3.3.3	28.3	Pass