



Create a Test

On the HOME screen, touch **NEW TEST**. Follow prompts to enter test information and load cartridge.

NEW TEST

View Results and Report

Touch the **RESULTS** tab.

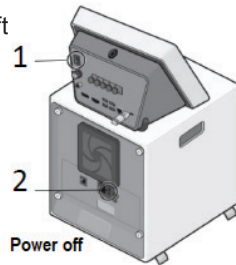
1. Select the tests to view.
2. Touch **REPORT** to view a test.
3. Touch Save to save a report.
4. Touch **Print** to print a report.

REPORT

Shutdown System

NOTE: Restart the system as needed or per the weekly maintenance schedule. When performing this task, make sure no tests are running.

1. Touch the Windows Start menu, touch Power icon, and select **Shut Down**.
2. Wait about 10 seconds for Microsoft Windows to shut down and then press the Power switch on back of the touchscreen.
3. Press the Power switch on back of the GeneXpert instrument.



Clean Plunger Rods and Bays

Frequency: Quarterly

Refer to Operator Manual for detailed instructions.

1. Touch **ADMIN > Instrument > Plunger Rod Maintenance**.
2. Select module(s), touch **CLEAN**.
3. Moisten a lint-free wipe with a 1:10 dilution of household chlorine bleach. Wipe plunger rod and entire cartridge bay interior with the diluted bleach 3 times, allowing the bleach to remain for 2 minutes each time.
4. Moisten lint-free wipe with 70% ethanol or denatured ethanol. Wipe plunger rod and entire cartridge bay with the ethanol solution to remove bleach residue.
5. Move plunger up, and touch **COMPLETE**.

Import Assay Definition Files (if applicable)

Import ADFs from the included CD. Some can be downloaded from Cepheid website.

1. Download the ADF to your touchscreen.
2. Touch **ADMIN**, then **MANAGE ASSAYS**.
3. Touch **IMPORT ASSAY**.
4. Navigate to the ADF file. Touch **Open**.

IMPORT ASSAY

Archive and Purge

Frequency: Archive and purge as needed per your monthly maintenance schedule.

1. Touch **ADMIN** tab.
2. Touch **ARCHIVE TESTS**.
3. Touch **Select All** or select individual tests to be archived or removed.
Optional: Select **Purge Selected Tests from List after Archiving** if desired. **Cloak IDs** to hide sensitive patient information.
4. Touch **ARCHIVE** to archive the files to a storage location.
5. If you selected Purge, confirm this action.

See the *GeneXpert System with Touchscreen Operator Manual or Assay Instructions for Use* for detailed information.

For a translated version of this guide, download from the included CD.

Technical Assistance

Before contacting Cepheid Technical Support collect:

- product name
- cartridge and reagent lot number
- serial number of the system
- error messages
- software version

Log a support ticket online: <https://www.cepheid.com/support>.

United States

Phone: +1 888 838 3222
techsupport@cepheid.com

European Headquarters

Phone: +33 563 825 319
support@cepheideurope.com



Quick Start Guide

GeneXpert® System with Touchscreen



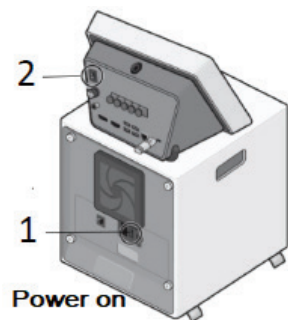
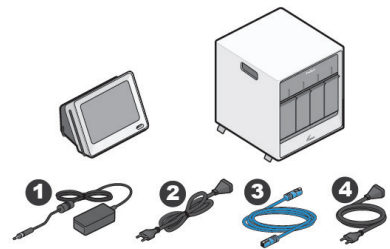
302-5482 Rev. A March 2022

1

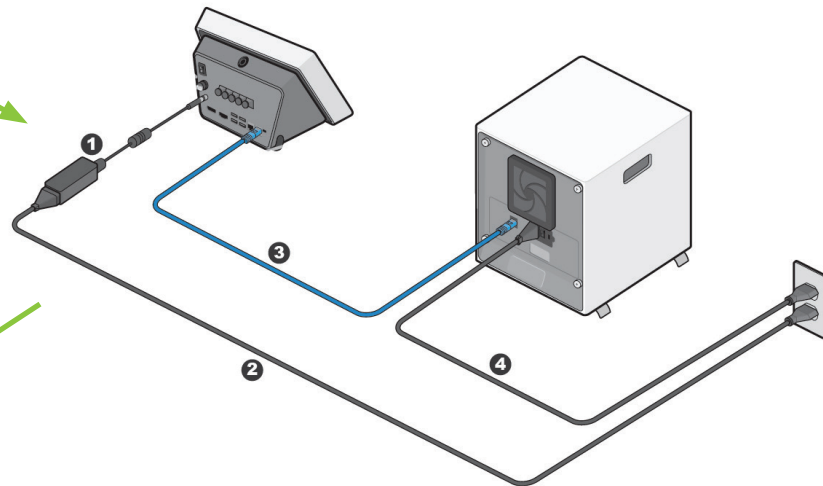
Unpack, Place & Connect

Place the instrument on a flat, level, stable surface.

⚠️ Avoid placing multiple instruments close together or near ventilation. Ensure 2" minimum clearance.



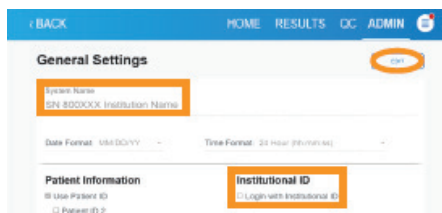
1. Connect power cables (1, 2, and 4).
2. Carefully turn the silver connector clockwise to attach the power cord.
3. Connect blue network cable (3) from instrument into "Network" port on the touchscreen.
4. Turn on the GeneXpert instrument.
5. Turn on the touchscreen.



2

Login & Rename Device

1. Swipe up on the Windows screen and enter the default password: **cphd**.
2. Cepheid OS software launches and prompts Database Management Tasks. Touch **No**.
3. Touch **ADMIN**, then **General Settings**.
4. Touch **Edit** and rename the system. (Site name and Serial Number recommended.)
5. Select **Login with Institutional ID** to enable ID scanning.



3

Add Admin and Basic Users

To add locally:

1. Touch **ADMIN**, then **USERS**.
2. Touch **Add User**.
3. Define an Admin user.
4. Click **Confirm**.
5. Click **Add User** multiple times to add more.

To add users within the Data Management System:
Refer to Operator Manual.



4

Set QC Lockout Settings

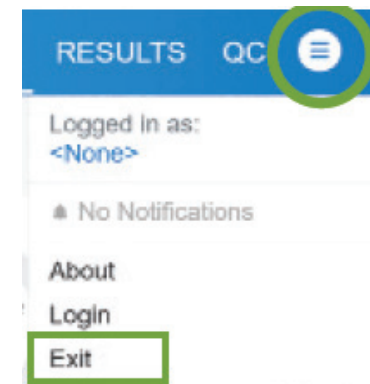
1. Touch **ADMIN**, then **QC LOCKOUT SETTINGS**.
2. Configure QC Lockout Settings per your institution's requirements.
3. Touch **Confirm**.



6

Exit Cepheid OS/Log into Windows

Exit Cepheid OS software.
Touch **User Menu** > **Exit**.



8

Connect to Network

Two options for connecting to your institution's intranet:

Wi-Fi

1. Insert the included Wi-Fi Adapter into a USB port at the back of the touchscreen.
2. Select a Wi-Fi signal. Install driver if required.

Ethernet

1. Insert an ethernet cable into the Network port at the back of the touchscreen.

5

Installation Qualification Report

1. Once the installation is complete, touch **ADMIN**, then **REPORTS**.
2. Touch **INSTALLATION QUALIFICATION** to generate, sign and save a report.



7

Set Date, Time, & Language

(if applicable)

1. Touch and hold Windows Start icon and select **Settings**.
2. Touch **Time & Language**.
3. Touch **Language**, then **Add a Language**.
4. Select **Language** and touch **Install**.
5. Select **Date & Time**.
6. Select your Timezone.
7. Restart the touchscreen.

